

闭式端子免换模压接模具(HCA/NHCA)

HCA/NHCA CRIMPING APPLICATOR

产品介绍 Introduction

HCA/NHCA 是海昌专门为闭式端子及屏蔽环压接而开发的模具，用于新能源汽车、充电桩、电瓶车等线束生产，它有压接范围广、高度调整空间大等优点。

HCA/NHCA crimping applicator is specially used for wings-closed terminals and shield rings.

This applicator is widely used for the production of the harness of EV cars, charger and battery cables. This applicator has the advantages of large crimping applicator range and big adjustment space.

特性 Features

● **压接灵活性:**

一模多用，正六方形尺寸可调，一款模具兼容多种端子的压接，为顾客节约成本；

● **快换结构:**

完美匹配HACINT公司P20 /P30 /油压机，也可根据顾客需求定制；

● **技术文件:**

提供完整的使用、保养说明书，若有要求也可提供机器能力研究、断面分析报告等文件；

● **超强抗锈:**

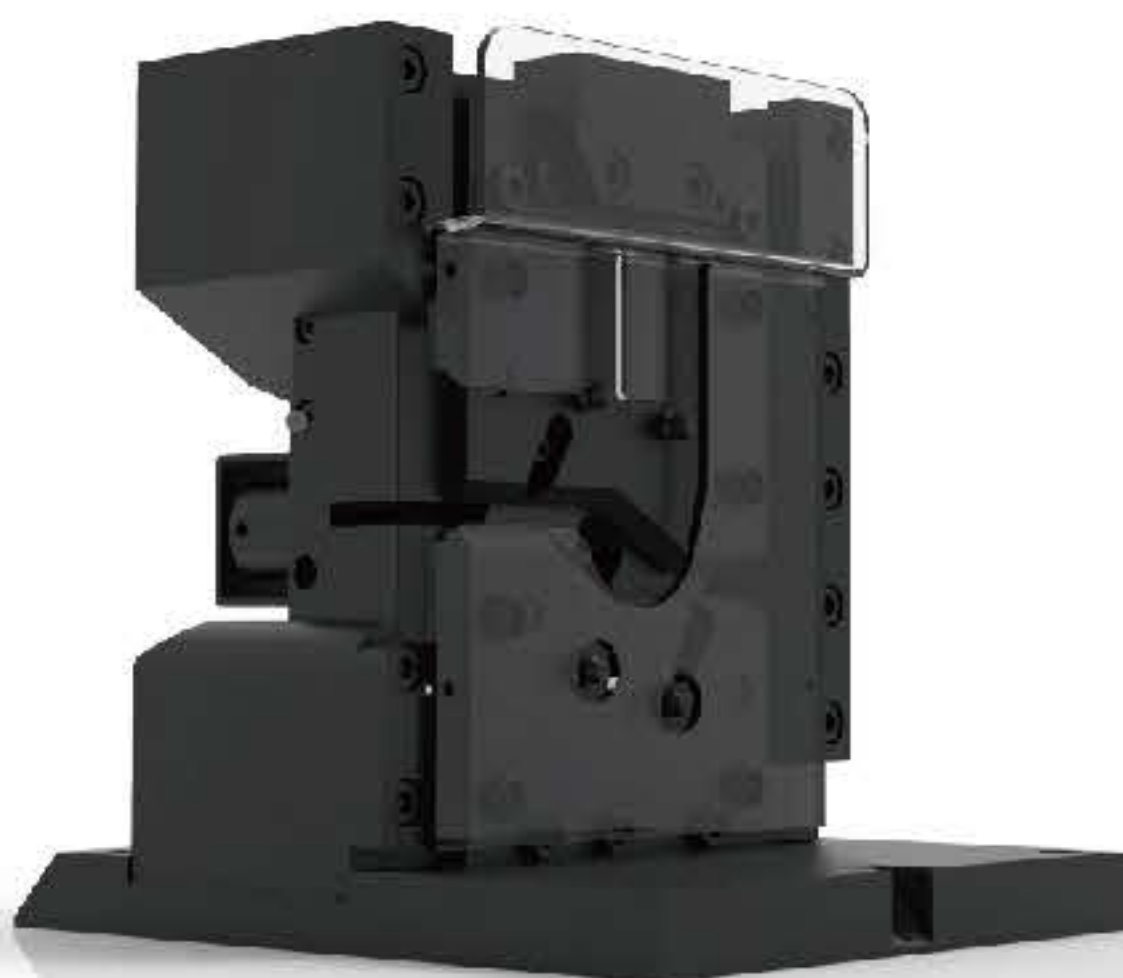
QW表面处理；

● **产品追溯:**

每个零件都拥有自己的ID；

● **云端数据:**

扫描二维码，实时查看出厂资料信息。



• NHCA



● **Flexible crimp**

Multiple use, adjustable dimensions of the hexagon and high compatibility for the crimp of various terminal save a lot of cost;

● **Quick-change**

Perfectly fit P20/P30 crimping applicator machine and it's customizable for different demand;

● **Technical documentation**

Complete manual of use and maintenance, the performance study and microsection report are available;

● **Super anti-rust**

QW surface plating;

● **ID track**

Unique ID for each part;

● **Cloud data**

Scan the QR code to check the documentation.

技术参数 Specifications

型号	Type	HCA	NHCA
放线方式	Feeding Type	前后 Side Feed	左右 End feed
料带形式	Feed Type	单粒 Loose	
闭合高度	Shut Heigh	197.5mm	
精度	Precision	± 0.05mm	
可调高度	Height adjust range	± 6.0mm	
线径范围	Wire Cross Sections	6-120mm²	
适应端子料厚	Terminal thickness	2.0mm(max)	
外形尺寸	Dimensions	L212 × W115 × H213mm	L212 × W170 × H213mm
重量	Weight	22kg	